

THREAD ROLLS FOR MAJOR MANUFACTURERS

CONVERSION CHART

BRAND: FETTE ATTACHMENTS



STYLE/MODEL:

Axial: F-Series
Axial: FU-Series
Axial: F-RN-Series
Axial: K-Series

STYLE/MODEL:

G-Series
G-Series
G-Series
G-Series

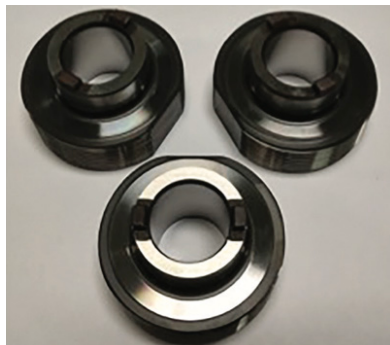


STYLE/MODEL:

Tangential: T-Series

STYLE/MODEL:

T12, T16, T18, T20, T22



STYLE/MODEL:

Radial: E-Series
Tangential: C-Series

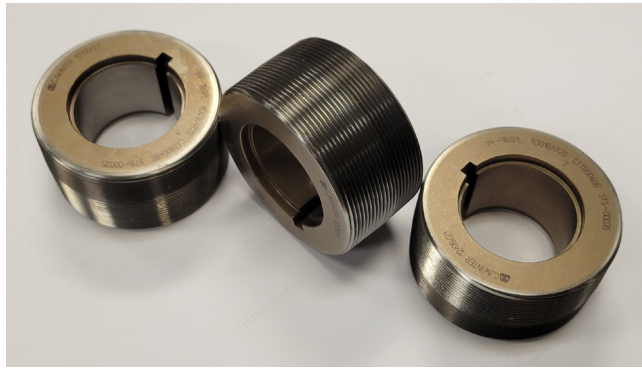
STYLE/MODEL:

E10, E13, E16, E23
C10, C16, C24, C36

THREAD ROLLS FOR MAJOR MANUFACTURERS

CONVERSION CHART

BRAND: REED



**Overhung Die Holders
(Keyway)**

R 10 C
R 20 C
R 30 C
R 40 C



**Double Support Die Holders
(Splines)**

R 1 B
R 2 B
R 3 B
R 4 B
R 9 B



STYLE/MODEL:

B-5
B-8
B-10 (500-G2A)
B-13 (750-G2A)

STYLE/MODEL:

B-18 (1000-G2A)
B-36

STYLE/MODEL:

B05
B08
B10
B13

STYLE/MODEL:

B18
B36

THREAD ROLLS FOR MAJOR MANUFACTURERS

CONVERSION CHART

BRAND: LANDIS



STYLE/MODEL:

14GA
18GA
20GA
22GA
24GA

STYLE/MODEL:

L14
L18
L20
L22
L24

STYLE/MODEL:

No. 3 1/2
No. 5
No. 7
No. 10

STYLE/MODEL:

G70
G71
G72
G73

BRAND: SALVO



STYLE/MODEL:

CBL
BBL
DBL

STYLE/MODEL:

CBL
BBL
DBL

THREAD ROLLS FOR MAJOR MANUFACTURERS

CONVERSION CHART

BRAND: **DAVENPORT**


STYLE/MODEL:

1421-SA

1431-SA

1431-SA

STYLE/MODEL:

DAV

DAV

DAV

BRAND: **DETROIT**


STYLE/MODEL:

76000 (0-375)

76100 (6-625)

76200 (10-750)

STYLE/MODEL:

76300 (30-1000)

76400 (25-1125)

STYLE/MODEL:

DE0

DE1

DE2

STYLE/MODEL:

DE3

DE4

ABOUT **CJWINTER**[®]

CJWinter[®] is an AS9100 and ISO 9001:2008 certified company manufacturing the premier line of thread rolling attachments, thread rolls, specialty dies and tooling for multi-spindle and CNC machines. We ship to customers throughout North America and provide the highest level of quality as well as quick turnaround times.